



SecureTrack Integration for F5 BIG-IP LTM through Tufin Open Platform

Technical Solution Brief

Introduction

Tufin's Security Operations Management solution, SecureTrack™, is designed to help efficiently track changes, perform risk analysis and optimize firewall operations. With version 5.0, SecureTrack's capabilities have been extended to provide configuration change tracking and monitoring of generic security and network devices. Additionally, these devices can be incorporated into Tufin's SecureChange™ Workflow.

Integration of SecureTrack with security and network devices is achieved through the Tufin Open Platform (TOP) Alliance Program, an industry-wide alliance of leading security and networking vendors. With TOP, technology partners and customers can develop customized plugins, specific to the monitored device models. Once the plugin is installed in SecureTrack, configuration text files are retrieved from the device. The alliance partners are provided with a Software Development Kit (SDK) for plugin development.

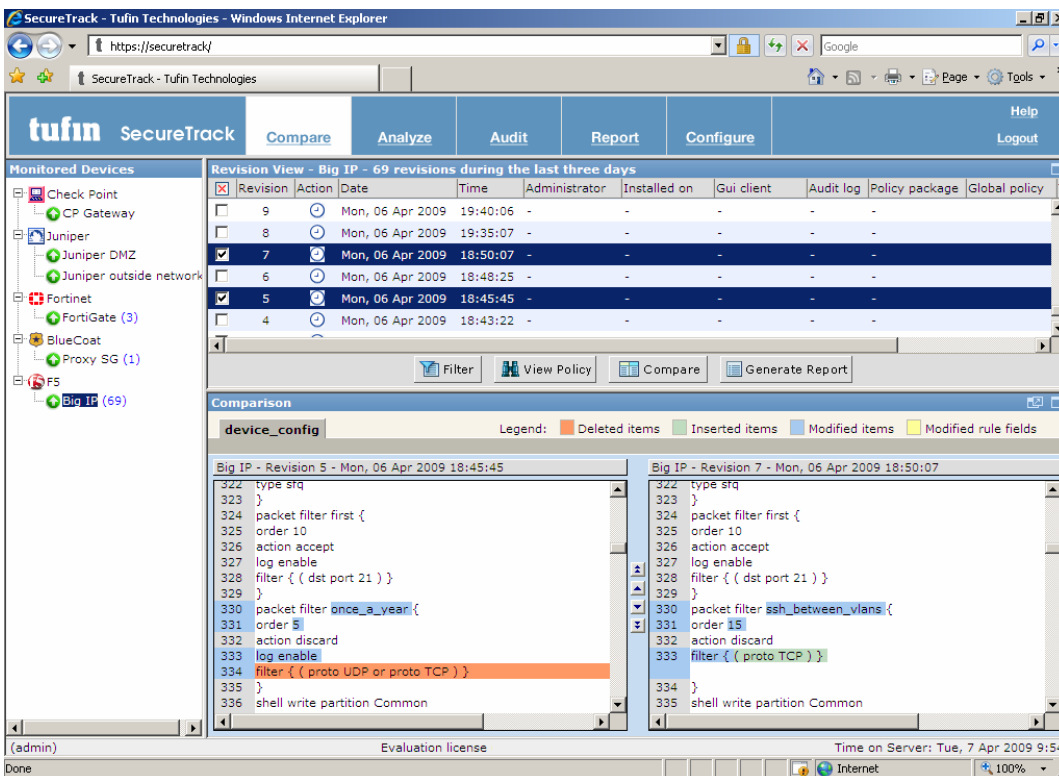
The TOP plugin for F5 BIG-IP Local Traffic Manager (LTM) defines how SecureTrack retrieves and handles F5 configurations. Initially, this plugin will support configuration retrieval from F5 BIG-IP LTM devices. Additional plugins may be created by Tufin and by other members of the TOP alliance, including Tufin customers.

Tufin Open Platform Architecture

The F5 TOP plugin tracks all changes made to BIG-IP LTM devices. The plugin, installed in SecureTrack, enables periodic query of the device's running-config file. Every time SecureTrack identifies a change to the running-config, it retrieves the current configuration via SSH and stores it as a revision in its database. SecureTrack also allows seamless integration of the plugin with SecureChange Workflow, as with all other previously supported devices.

The F5 BIG-IP LTM plugin is preinstalled in SecureTrack. Administrators can immediately start monitoring F5 devices by defining the devices' connection details (IP address, SSH username and password) in SecureTrack.

All further tasks are performed from the SecureTrack's web interface as well.



Comparison of F5 configurations in SecureTrack

Features

The first generation of the TOP plugin for F5 BIG-IP LTM supports the following features:

- Configuration change tracking: Monitoring configuration changes and storing them as revisions in SecureTrack’s database.
- Side-by-side comparison of textual running config: Comparing any two points in time to detect specific configuration changes that were implemented on the F5 devices
- Email notifications on changes: Every configuration change that is detected, triggers a real time email alert, which is sent to the relevant administrators.
- Periodic change report: SecureTrack administrators and users can produce a periodic report that details all changes. This report can be sent by email, stored on the SecureTrack server, or it can be generated in SecureTrack’s web interface, and saved in HTML, MHT or PDF format.
- Integration with Tufin’s SecureChange Workflow: Seamless integration with Tufin’s security change automation product.



About Tufin Technologies

Tufin Technologies is the leading provider of Security Lifecycle Management solutions that enable large organizations to enhance security, ensure business continuity and increase operational efficiency. Tufin's products SecureTrack™ and SecureChange™ Workflow help security operations teams to manage change, minimize risks and dramatically reduce manual, repetitive tasks through automation. With a combination of accuracy and simplicity, Tufin empowers security officers to perform reliable audits and demonstrate compliance with corporate and government standards. Founded in 2003 by leading firewall and business systems experts, Tufin now serves 300 customers around the world, including leading financial institutions, telecom service providers, transportation, energy and pharmaceutical companies. For more information visit www.tufin.com.