



Making Security Manageable

SecureChange™ Workflow

Security Change Automation

Proactive compliance - Improved governance - Efficiency

The industry standard for Security Change Automation:

- Extended IT automation
- Superior risk management
- Improved network security
- Proactive IT governance
- Enforcement of corporate security policy
- Compliance with industry and regulatory standards
- Separation of duties
- Operational efficiency

Awards and Reviews:

InfoSecurity Products Guide 2009 Global Product Excellence Awards.

Best Security Lifecycle Management Solution.

InformationWeek Startup 50 April 2009. Tufin made list of 50 leading young companies.

SecureChange Workflow automates security change management and risk analysis for firewalls and related network security infrastructure. With SecureChange Workflow, companies can automate business processes to proactively enforce security policies. Designed to handle the entire security change lifecycle from initial business request through final configuration change audit, SecureChange Workflow supports governance initiatives and takes corporate and regulatory compliance to the next level.

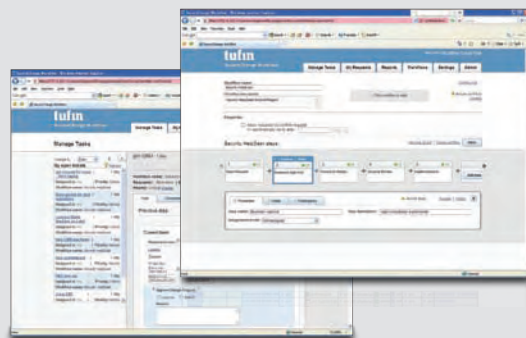
Security change automation

SecureChange Workflow is a change management solution designed specifically for firewalls and network security devices including routers, switches, load balancers, web proxy gateways and more. SecureChange Workflow handles the ticketing workflow for user requests such as access control, combining business process automation with in-depth security analysis and auditing capabilities. SecureChange Workflow delivers the benefits of IT automation for security operations – reducing manual, repetitive tasks, increasing accuracy and reducing risk.

Security process management

With SecureChange Workflow, you can define, implement and enforce the security change process. SecureChange Workflow supports a separation of duties, interfacing with organizational directory servers like Microsoft Active Directory to apply permissions for administrators, requestors, and approvers at each step of each workflow. Workflows can include parallel steps to accommodate multiple teams or to route parts of complex requests to other teams inside the company.

To move the process along, SecureChange Workflow provides an intuitive task management console and sends e-mail alerts to users when they are assigned a task. Every step of the way – from request through approval, design, verification and audit – SecureChange Workflow provides role-based tools that make each task simpler to perform.



T-Series Appliances

SecureChange Workflow at a Glance

- Business process automation
- Automated proactive risk analysis
- Security policy change advisor
- End-to-end auditing and compliance
- Unlimited multi-role workflows
- Rapid integration with ticketing systems
- Customizable workflow templates

Proactive risk analysis

Using the powerful risk analysis capabilities of Tufin SecureTrack, SecureChange Workflow alerts managers to potential security risks and ensures compliance with organizational security standards – before any change is executed.

During the design stage, the Policy Change Advisor offers a concrete suggestion on how best to implement the configuration change to optimize security and performance. Recommendations include deleting or changing existing rules or objects on all network and security devices.

Business process templates

SecureChange Workflow comes with pre-defined templates that represent the industry best practices for the security change automation process. The templates also include forms for a variety of common change requests. Form fields are automatically populated using data from the actual security device configuration.

With the intuitive change-template editor, it is easy to customize both the process and individual steps to meet the needs of your organization.

Seamless security audits

Throughout the security change lifecycle, a comprehensive audit trail is maintained. A variety of audit reports provide a complete picture of operations and full accountability at any time. Out-of-the box audit reports include industry standards such as PCI-DSS and eliminate the need for painstaking information gathering and analysis before internal and external audits. With Tufin, companies are slashing audit preparation times by more than 50%.



“The ROI calculations clearly show that SecureChange Workflow reduces the cost of security change management by half annually.”

Ariel Avitan,
Industry Analyst
Frost & Sullivan

Scalability and customization

Based on flexible, distributed deployment architecture, SecureChange Workflow supports central management for a virtually unlimited number of firewalls and network devices distributed at multiple sites. SecureChange Workflow is available as:

- T-Series appliances
- Linux based software (Redhat, CentOS)
- VMware virtual appliance

TOP – Tufin Open Platform

Through TOP, the Tufin Open Platform, SecureChange Workflow supports a growing list of firewalls and network infrastructure. With the TOP SDK, it is simple for customers and partners to create plug-ins. See the Tufin website for the latest list of supported devices and vendors.

